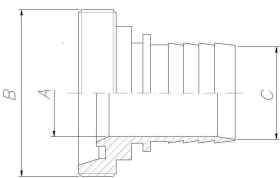




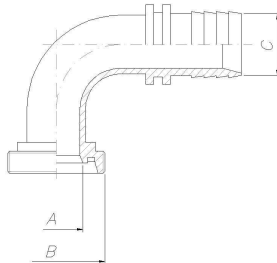
**STAINLESS STEEL FITTINGS 316L**

<b>DIN 11851</b>						
DN	A (mm)	B (DIN 405) Thread	C (mm)	C (inch)	PART NR. MALE	PART NR. FEMALE
10	10	28x1/8"	10	3/8	021100001010	021000001010
15	16	34x1/8"	15	5/8	021100001516	021000001516
20	20	44x1/6"	20	3/4	021100002020	021000002020
25	26	52x1/6"	25	1	021100002525	021000002525
32	32	58x1/6"	32	1 1/4	021100003232	021000003232
40	38	65x1/6"	38	1 1/2	021100003840	021000003840
50	50	78x1/6"	50	2	021100005050	021000005050
65	66	95x1/6"	63	2 1/2	021100006365	021000006365
80	81	110x1/4"	75	3	021100007580	021000007580
100	100	130x1/4"	102	4	021100102100	021000102100
125	125	160x1/4"	127	5	021100127125	021000127125
150	150	190x1/4"	152	6	021100150152	021000150152

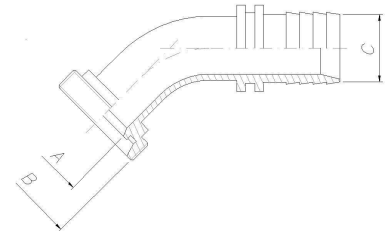
**DIN MALE**



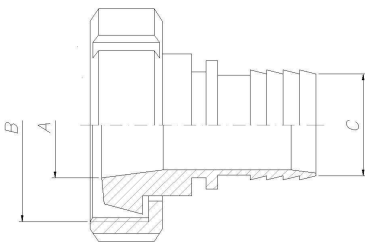
**DIN MALE 90°**



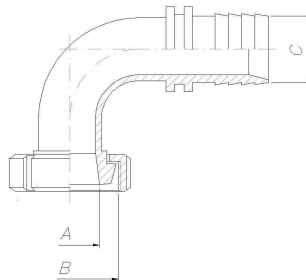
**DIN MALE 45°**



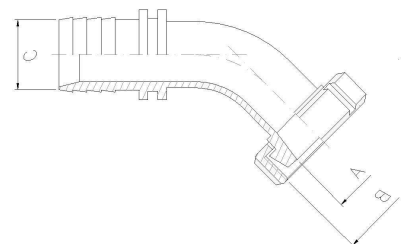
**DIN FEMALE**



**DIN FEMALE 90°**



**DIN FEMALE 45°**



**For other sizes do not hesitate in contact us.**